

YEAR

2015

LINK

SHANGHAI ST (from DUNDAS ST to ARGYLE ST)

COVERAGE (B) STATION

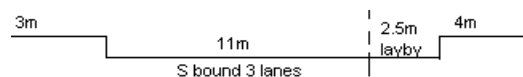
4209

ROAD NETWORK

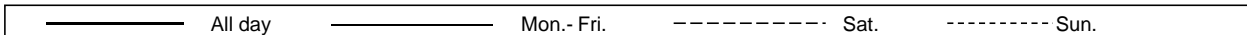
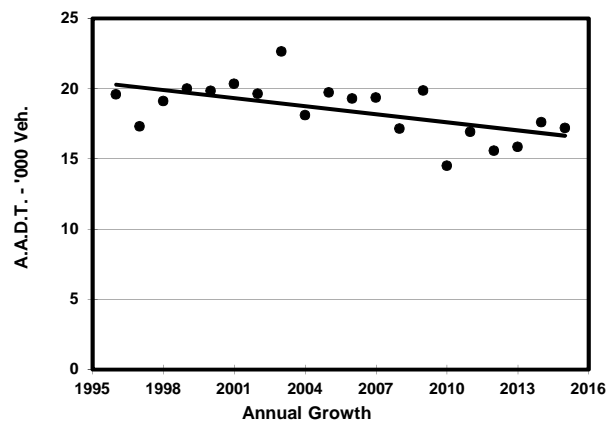
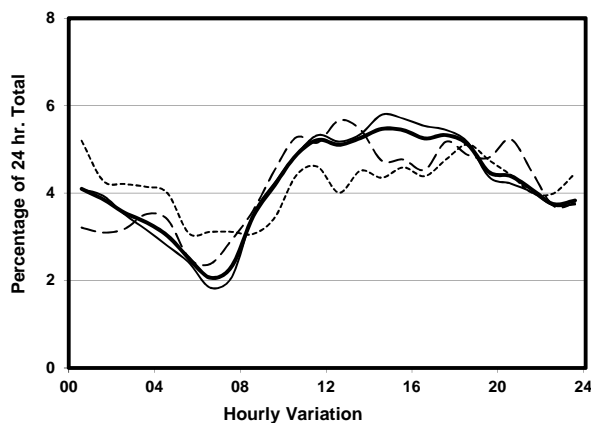
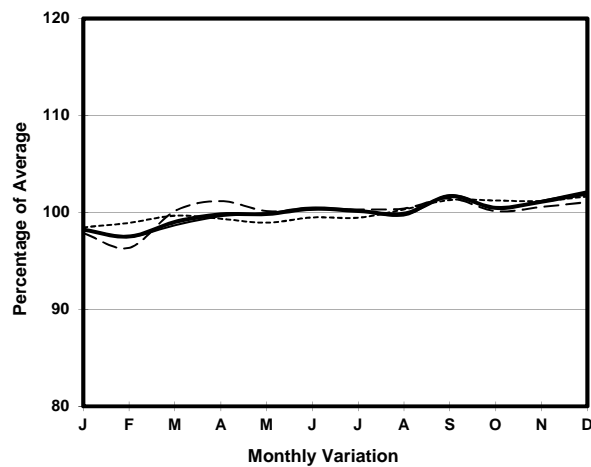
MAJOR

ROAD TYPE

DISTRICT DISTRIBUTOR



## 1. TRAFFIC FLOW VARIATION AND GROWTH



## 2. TRAFFIC CHARACTERISTICS (BY DIRECTION)

Parameter	All - Day	Mon. - Fri.	Sat.	Sun.
<b>SOUTH BOUND</b>				
A.A.D.T.	17180	17970	16980	14490
R 12 / 24 - %	57	58.2	56.7	50.4
R 16 / 24 - %	73.7	74.5	74.9	67.5
AM Peak Hour	0900-1000	0900-1000	0900-1000	0900-1000
One-way flow at AM peak hour	720	760	770	500
T - % (AM)	-	7.1	-	-
PM Peak Hour	1700-1800	1600-1700	1700-1800	1800-1900
One-way flow at PM peak hour	920	1000	880	740
T - % (PM)	-	4.8	-	-
Prop.of commercial vehicles - 16 hr.	-	5	-	-
 A.A.D.T.	-	-	-	-
R 12 / 24 - %	-	-	-	-
R 16 / 24 - %	-	-	-	-
AM Peak Hour	-	-	-	-
One-way flow at AM peak hour	-	-	-	-
T - % (AM)	-	-	-	-
PM Peak Hour	-	-	-	-
One-way flow at PM peak hour	-	-	-	-
T - % (PM)	-	-	-	-
Prop.of commercial vehicles - 16 hr.	-	-	-	-

## 3. OTHER INFORMATION AND COMMENT

**4. Vehicle classification and occupancy - Monday to Friday**

Time		Class of vehicle									
		Motor	Private	Taxi	Private	PLB	Goods veh.		Non	Fr. Bus	
		Cycle	Car		LB		Light	M & H	Fr. Bus	SD	DD
0700-0800	Pro	0.0	7.5	22.4	5.6	18.7	31.8	3.7	5.6	0.5	4.2
	Ocp	0.0	1.8	2.2	3.3	9.5	1.6	2.5	8.0	5.0	16.7
0800-0900	Pro	4.2	10.9	27.7	1.7	18.5	26.9	0.0	7.6	0.2	2.3
	Ocp	1.0	1.5	1.7	9.0	9.1	1.7	0.0	20.7	14.0	12.4
0900-1000	Pro	1.8	27.1	20.9	1.2	14.8	27.1	3.1	1.8	0.0	2.2
	Ocp	1.0	1.5	1.9	5.5	5.8	1.6	2.0	16.0	0.0	11.9
1000-1100	Pro	0.6	15.7	37.3	0.0	8.2	31.5	3.5	1.8	0.3	1.2
	Ocp	1.0	1.4	1.4	0.0	7.9	1.5	1.5	6.3	6.5	13.4
1100-1200	Pro	0.0	20.2	29.7	0.0	9.5	33.4	2.5	3.2	0.0	1.6
	Ocp	0.0	1.6	1.3	0.0	5.9	1.7	2.0	2.4	0.0	13.3
1200-1300	Pro	3.3	14.7	33.2	0.0	7.1	36.5	2.2	1.6	0.0	1.4
	Ocp	1.0	1.4	1.5	0.0	8.2	1.6	1.5	22.3	0.0	10.1
1300-1400	Pro	0.5	26.9	27.9	0.5	8.0	33.9	0.5	0.5	0.1	1.1
	Ocp	1.0	1.4	1.5	6.0	7.3	1.6	2.0	5.0	10.0	13.8
1400-1500 Peak hour	Pro	2.8	29.6	26.4	0.0	9.4	27.8	1.9	0.9	0.0	1.2
	Ocp	1.0	1.4	1.6	0.0	7.7	1.6	2.3	3.5	0.0	11.0
1500-1600	Pro	4.1	29.4	24.8	0.5	7.6	27.3	4.1	1.0	0.1	1.1
	Ocp	1.3	1.7	1.7	4.0	7.9	1.6	1.8	3.5	14.0	13.0
1600-1700	Pro	1.9	45.7	23.2	1.3	9.6	13.5	1.3	1.9	0.0	1.6
	Ocp	1.3	1.4	1.9	8.0	8.7	1.9	2.0	3.3	0.0	11.7
1700-1800	Pro	2.6	32.2	34.9	1.1	12.2	13.7	0.5	1.6	0.0	1.2
	Ocp	1.0	1.5	1.6	2.0	7.8	1.8	2.0	6.0	0.0	12.8
1800-1900	Pro	1.9	36.5	23.5	0.0	16.7	16.7	1.2	1.9	0.3	1.2
	Ocp	1.3	1.5	2.2	0.0	8.5	1.4	1.0	6.7	6.0	12.4
1900-2000	Pro	0.6	46.2	33.2	0.0	12.9	4.3	0.0	1.2	0.0	1.5
	Ocp	2.0	1.5	1.9	0.0	6.9	1.7	0.0	4.5	0.0	8.5
2000-2100	Pro	1.9	44.4	38.3	0.0	11.1	2.5	0.0	0.6	0.0	1.2
	Ocp	1.0	1.5	1.8	0.0	5.2	1.5	0.0	1.0	0.0	6.5
2100-2200	Pro	3.0	38.1	46.4	0.0	6.7	3.0	0.0	0.7	0.2	1.9
	Ocp	1.3	1.6	1.8	0.0	7.8	1.3	0.0	15.0	3.0	5.4
2200-2300	Pro	2.6	47.7	30.4	0.0	6.9	8.7	0.9	0.9	0.0	2.0
	Ocp	1.0	1.8	2.4	0.0	3.4	1.6	1.0	6.0	0.0	5.2
16 hours	Pro	2.0	30.2	30.1	0.5	10.6	21.5	1.6	1.8	0.1	1.5
	Ocp	1.1	1.5	1.7	5.3	7.4	1.6	1.8	10.1	7.9	11.1

**Legend**

**Pro.** Proportion of vehicles in % (Sum may not add up to 100% due to figure rounding)\*

**Ocp.** Average occupancy of vehicles including both driver and passengers\*

**M&H** Medium and Heavy

\* All traffic data are collected from combined bounds except for one way traffic